

LEGEND

	Site Boundary
	Residential Receptor
	Grade II Listed Building
	Veteran Tree
	A1173
	Other Road
	Public Right of Way
	Watercourse
	Long Strip Tree Preservation Order
	Local Wildlife Site
	Special Area of Conservation
	Special Protection Area
	Site of Special Scientific Interest
	Ramsar
	Residential Area

NOTES

© Natural England copyright. Contains Ordnance Survey data © Crown copyright and database right 2023.
 © Historic England 2023. Contains Ordnance Survey data © Crown copyright and database right 2023. The Historic England GIS Data contained in this material was obtained on 04/09/2023. The most publicly available up to date Historic England GIS Data can be obtained from HistoricEngland.org.uk.
 Contains Ordnance Survey Data © Crown Copyright and database right 2023. Reproduced from Ordnance Survey digital map data © Crown copyright 2024. All rights reserved. Licence number 0100031673.

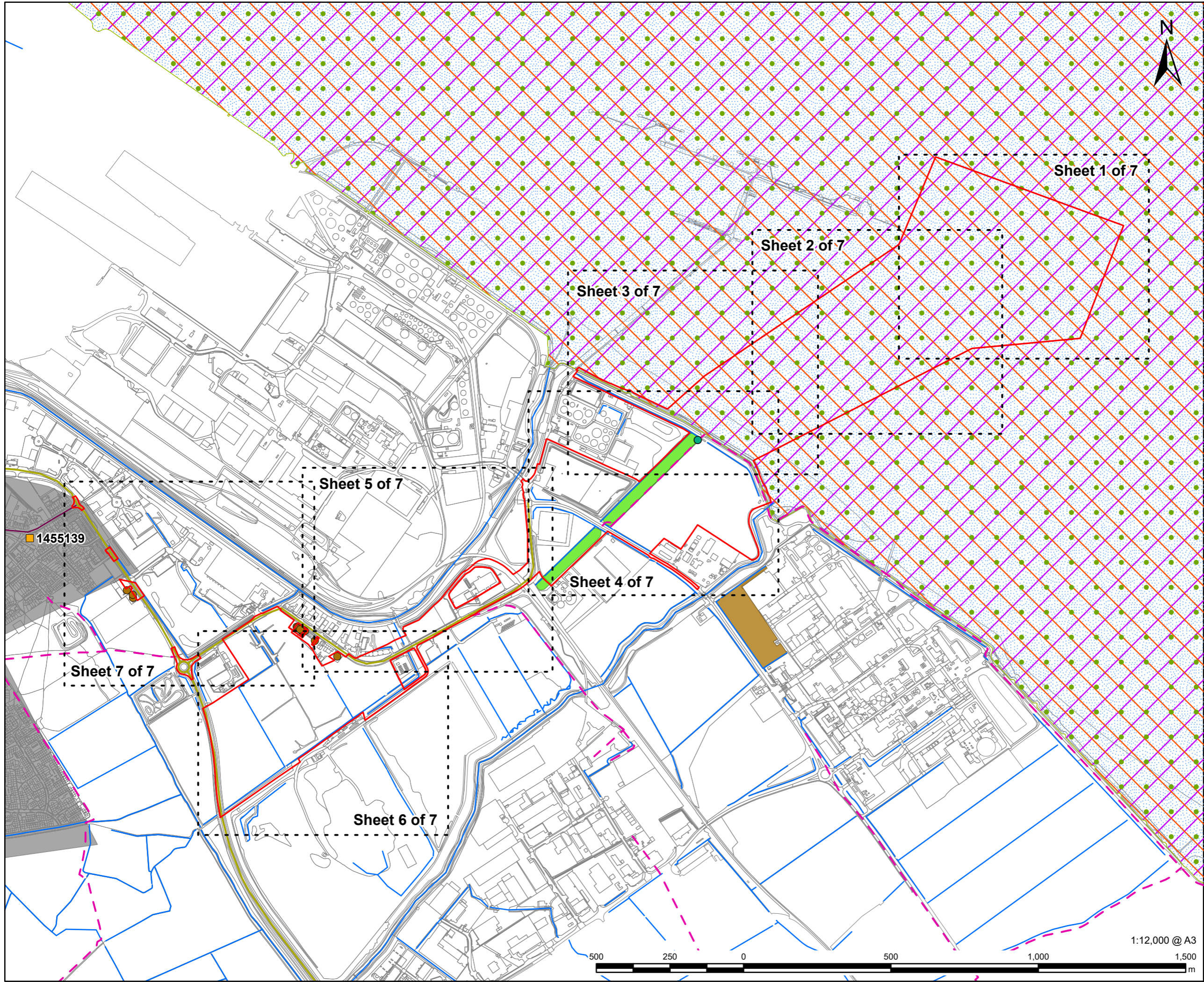
ISSUE PURPOSE
Environmental Statement (Change Application)

PROJECT NUMBER
60673509

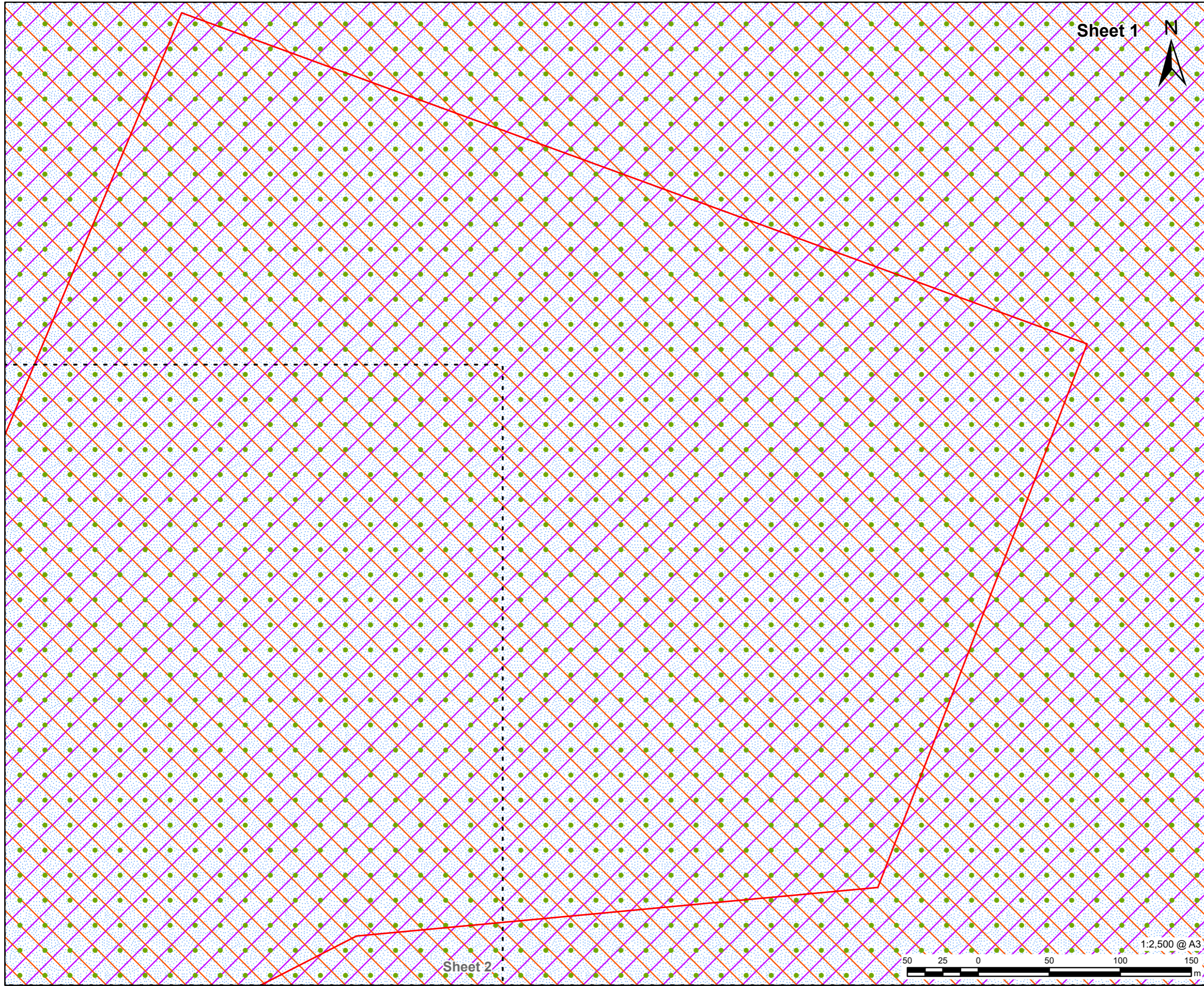
DEVELOPMENT CONSENT ORDER NO
TR030008

FIGURE TITLE
Site and Surrounding Environment Key Plan

FIGURE NUMBER
Figure 2.1



This drawing has been prepared for the use of AECOM's client. It may not be used, modified, reproduced or relied upon by third parties, except as agreed by AECOM or as required by law. AECOM accepts no responsibility, and denies any liability whatsoever, to any party that uses or relies on this drawing without AECOM's express written consent. Do not scale this document. All measurements must be obtained from the stated dimensions.



Sheet 1



AECOM

PROJECT
Immingham Green Energy Terminal

CLIENT
Associated British Ports
Air Products (BR) Limited

CONSULTANT
AECOM Limited
5th Floor
2 City Walk
Leeds, LS11 9AR
www.aecom.com

- LEGEND**
- Site Boundary
 - Watercourse
 - Special Area of Conservation
 - Special Protection Area
 - Site of Special Scientific Interest
 - Ramsar

NOTES

© Natural England copyright. Contains Ordnance Survey data © Crown copyright and database right 2023.
 © Historic England 2023. Contains Ordnance Survey data © Crown copyright and database right 2023. The Historic England GIS Data contained in this material was obtained on 04/09/2023. The most publicly available up to date Historic England GIS Data can be obtained from HistoricEngland.org.uk.
 Contains Ordnance Survey Data © Crown Copyright and database right 2023. Reproduced from Ordnance Survey digital map data © Crown copyright 2024. All rights reserved. Licence number 0100031673.

ISSUE PURPOSE
Environmental Statement (Change Application)

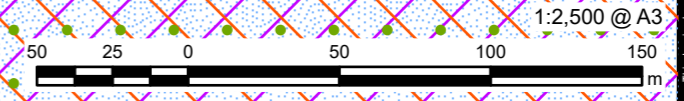
PROJECT NUMBER
60673509

DEVELOPMENT CONSENT ORDER NO
TR030008

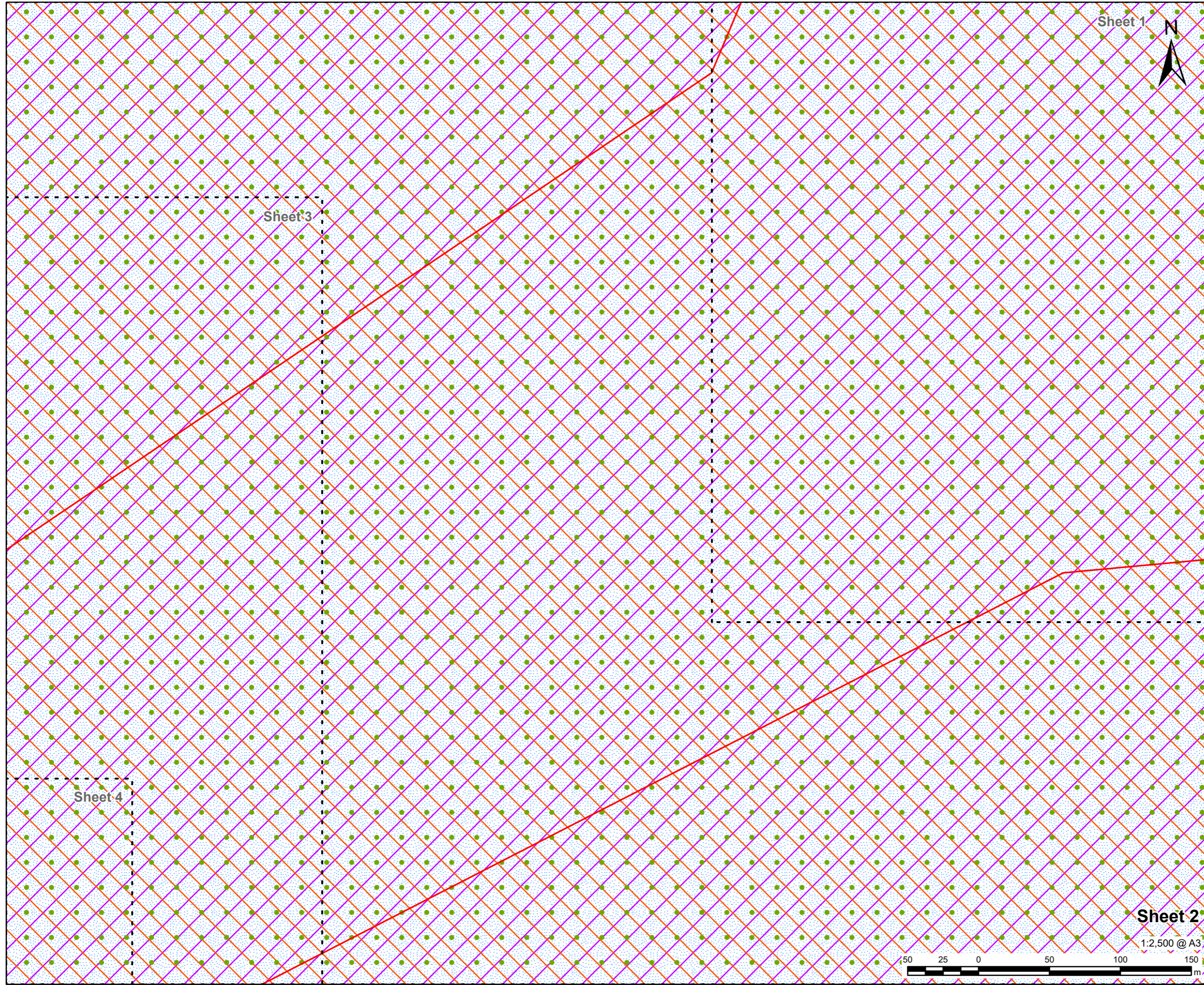
FIGURE TITLE
Site and Surrounding Environment
Sheet 1 of 7

FIGURE NUMBER
Figure 2.1

Sheet 2



This drawing has been prepared for the use of AECOM's client. It may not be used, modified, reproduced or relied upon by third parties, except as agreed by AECOM or as required by law. AECOM accepts no responsibility, and denies any liability whatsoever, to any party that uses or relies on this drawing without AECOM's express written consent. Do not scale this document. All measurements must be obtained from the stated dimensions.



Sheet 1



Sheet 3

Sheet 4

Sheet 2

1:2,500 @ A3



AECOM

PROJECT
Immingham Green Energy Terminal

CLIENT
Associated British Ports
Air Products (BR) Limited

CONSULTANT
AECOM Limited
5th Floor
2 City Walk
Leeds, LS11 9AR
www.aecom.com

- LEGEND**
- Site Boundary
 - Watercourse
 - Special Area of Conservation
 - Special Protection Area
 - Site of Special Scientific Interest
 - Ramsar

NOTES

© Natural England copyright. Contains Ordnance Survey data © Crown copyright and database right 2023.
 © Historic England 2023. Contains Ordnance Survey data © Crown copyright and database right 2023. The Historic England GIS Data contained in this material was obtained on 04/09/2023. The most publicly available up to date Historic England GIS Data can be obtained from HistoricEngland.org.uk.
 Contains Ordnance Survey Data © Crown Copyright and database right 2023. Reproduced from Ordnance Survey digital map data © Crown copyright 2024. All rights reserved. Licence number 0100031673.

ISSUE PURPOSE
Environmental Statement (Change Application)

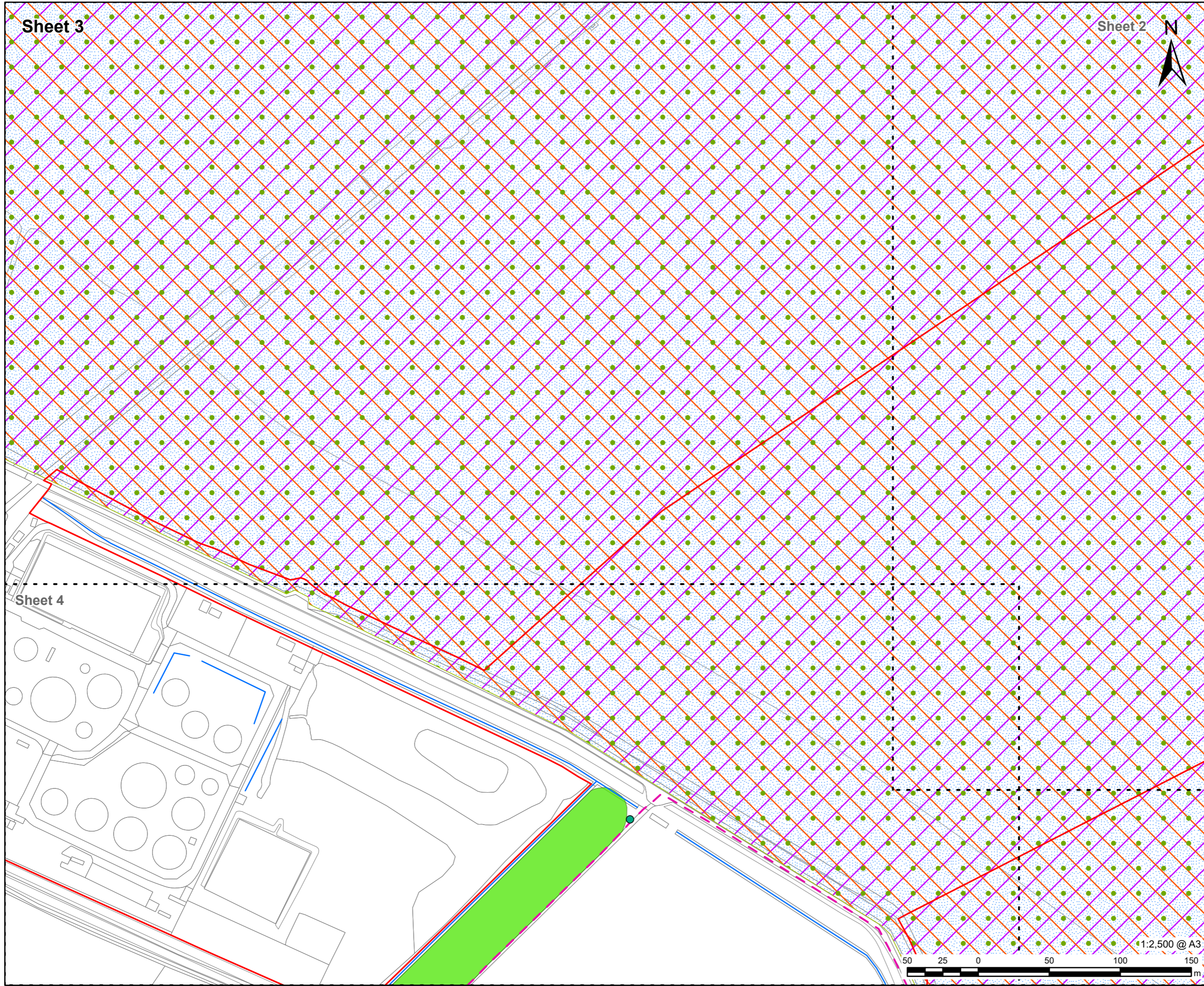
PROJECT NUMBER
60673509

DEVELOPMENT CONSENT ORDER NO
TR030008

FIGURE TITLE
Site and Surrounding Environment
Sheet 2 of 7

FIGURE NUMBER
Figure 2.1

This drawing has been prepared for the use of AECOM's client. It may not be used, modified, reproduced or relied upon by third parties, except as agreed by AECOM or as required by law. AECOM accepts no responsibility, and denies any liability whatsoever, to any party that uses or relies on this drawing without AECOM's express written consent. Do not scale this document. All measurements must be obtained from the stated dimensions.



PROJECT
Immingham Green Energy Terminal

CLIENT
Associated British Ports
Air Products (BR) Limited

CONSULTANT
AECOM Limited
5th Floor
2 City Walk
Leeds, LS11 9AR
www.aecom.com

- LEGEND**
- Site Boundary
 - Veteran Tree
 - Public Right of Way
 - Watercourse
 - Long Strip Tree Preservation Order
 - Special Area of Conservation
 - Special Protection Area
 - Site of Special Scientific Interest
 - Ramsar

NOTES

© Natural England copyright. Contains Ordnance Survey data © Crown copyright and database right 2023.
 © Historic England 2023. Contains Ordnance Survey data © Crown copyright and database right 2023. The Historic England GIS Data contained in this material was obtained on 04/09/2023. The most publicly available up to date Historic England GIS Data can be obtained from HistoricEngland.org.uk.
 Contains Ordnance Survey Data © Crown Copyright and database right 2023. Reproduced from Ordnance Survey digital map data © Crown copyright 2024. All rights reserved. Licence number 0100031673.

ISSUE PURPOSE
Environmental Statement (Change Application)

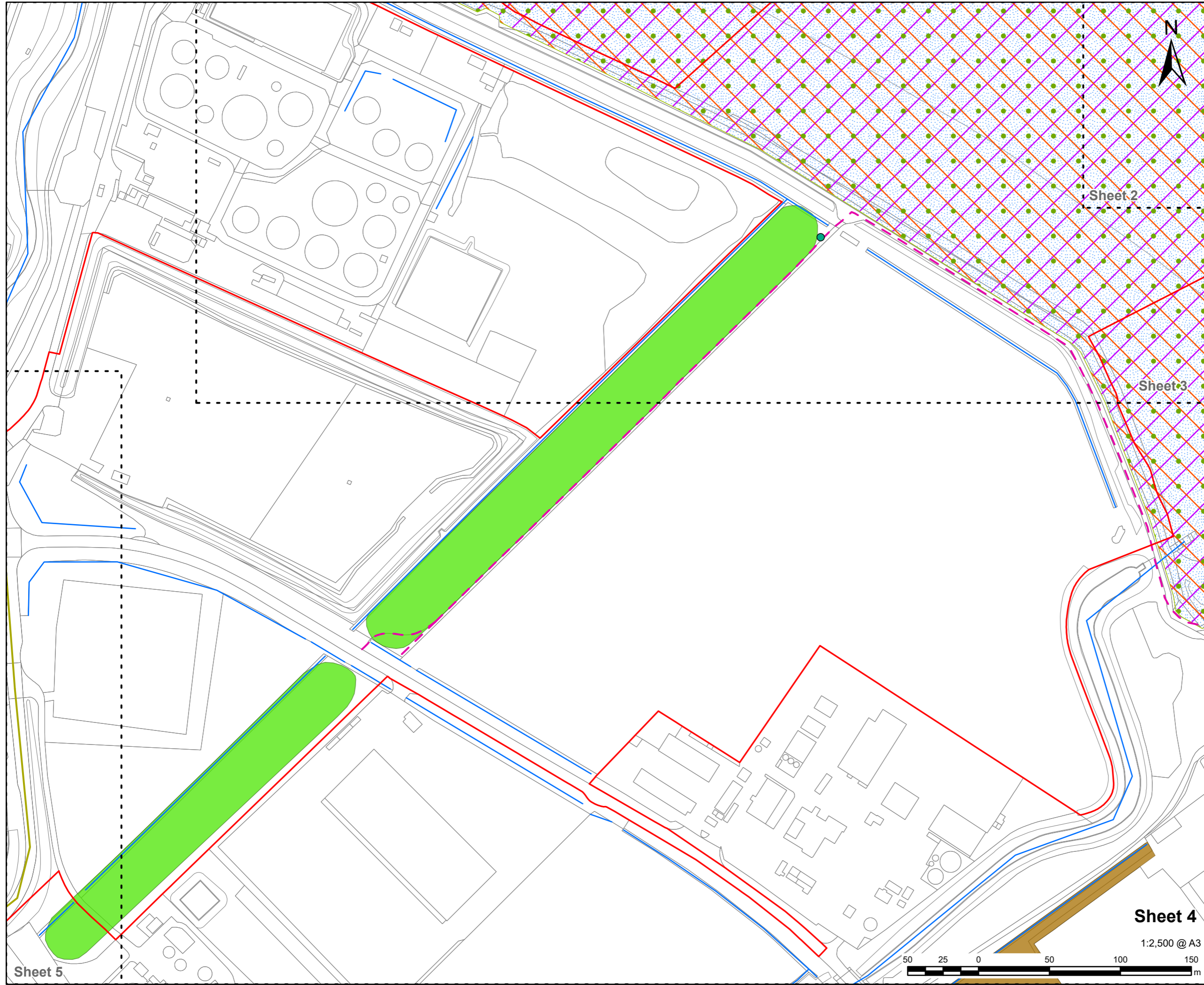
PROJECT NUMBER
60673509

DEVELOPMENT CONSENT ORDER NO
TR030008

FIGURE TITLE
Site and Surrounding Environment
Sheet 3 of 7

FIGURE NUMBER
Figure 2.1

This drawing has been prepared for the use of AECOM's client. It may not be used, modified, reproduced or relied upon by third parties, except as agreed by AECOM or as required by law. AECOM accepts no responsibility, and denies any liability whatsoever, to any party that uses or relies on this drawing without AECOM's express written consent. Do not scale this document. All measurements must be obtained from the stated dimensions.



PROJECT
Immingham Green Energy Terminal

CLIENT
Associated British Ports
Air Products (BR) Limited

CONSULTANT
AECOM Limited
5th Floor
2 City Walk
Leeds, LS11 9AR
www.aecom.com

- LEGEND**
- Site Boundary
 - Veteran Tree
 - A1173
 - Public Right of Way
 - Watercourse
 - Long Strip Tree Preservation Order
 - Local Wildlife Site
 - Special Area of Conservation
 - Special Protection Area
 - Site of Special Scientific Interest
 - Ramsar

NOTES

© Natural England copyright. Contains Ordnance Survey data © Crown copyright and database right 2023.
 © Historic England 2023. Contains Ordnance Survey data © Crown copyright and database right 2023. The Historic England GIS Data contained in this material was obtained on 04/09/2023. The most publicly available up to date Historic England GIS Data can be obtained from HistoricEngland.org.uk.
 Contains Ordnance Survey Data © Crown Copyright and database right 2023.
 Reproduced from Ordnance Survey digital map data © Crown copyright 2024. All rights reserved. Licence number 0100031673.

ISSUE PURPOSE
Environmental Statement (Change Application)

PROJECT NUMBER
60673509

DEVELOPMENT CONSENT ORDER NO
TR030008

FIGURE TITLE
Site and Surrounding Environment
Sheet 4 of 7

FIGURE NUMBER
Figure 2.1

Sheet 4

1:2,500 @ A3



Sheet 5

This drawing has been prepared for the use of AECOM's client. It may not be used, modified, reproduced or relied upon by third parties, except as agreed by AECOM or as required by law. AECOM accepts no responsibility, and denies any liability whatsoever, to any party that uses or relies on this drawing without AECOM's express written consent. Do not scale this document. All measurements must be obtained from the stated dimensions.

Sheet 5

Sheet 7

Sheet 6

Sheet 4



AECOM

PROJECT

Immingham Green Energy Terminal

CLIENT

Associated British Ports
Air Products (BR) Limited

CONSULTANT

AECOM Limited
5th Floor
2 City Walk
Leeds, LS11 9AR
www.aecom.com

LEGEND

- Site Boundary
- Residential Receptor
- A1173
- Public Right of Way
- Watercourse
- Long Strip Tree Preservation Order

NOTES

© Natural England copyright. Contains Ordnance Survey data © Crown copyright and database right 2023.
© Historic England 2023. Contains Ordnance Survey data © Crown copyright and database right 2023. The Historic England GIS Data contained in this material was obtained on 04/09/2023. The most publicly available up to date Historic England GIS Data can be obtained from HistoricEngland.org.uk.
Contains Ordnance Survey Data © Crown Copyright and database right 2023. Reproduced from Ordnance Survey digital map data © Crown copyright 2024. All rights reserved. Licence number 0100031673.

ISSUE PURPOSE

Environmental Statement (Change Application)

PROJECT NUMBER

60673509

DEVELOPMENT CONSENT ORDER NO

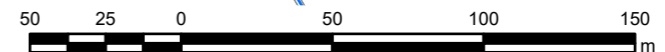
TR030008

FIGURE TITLE

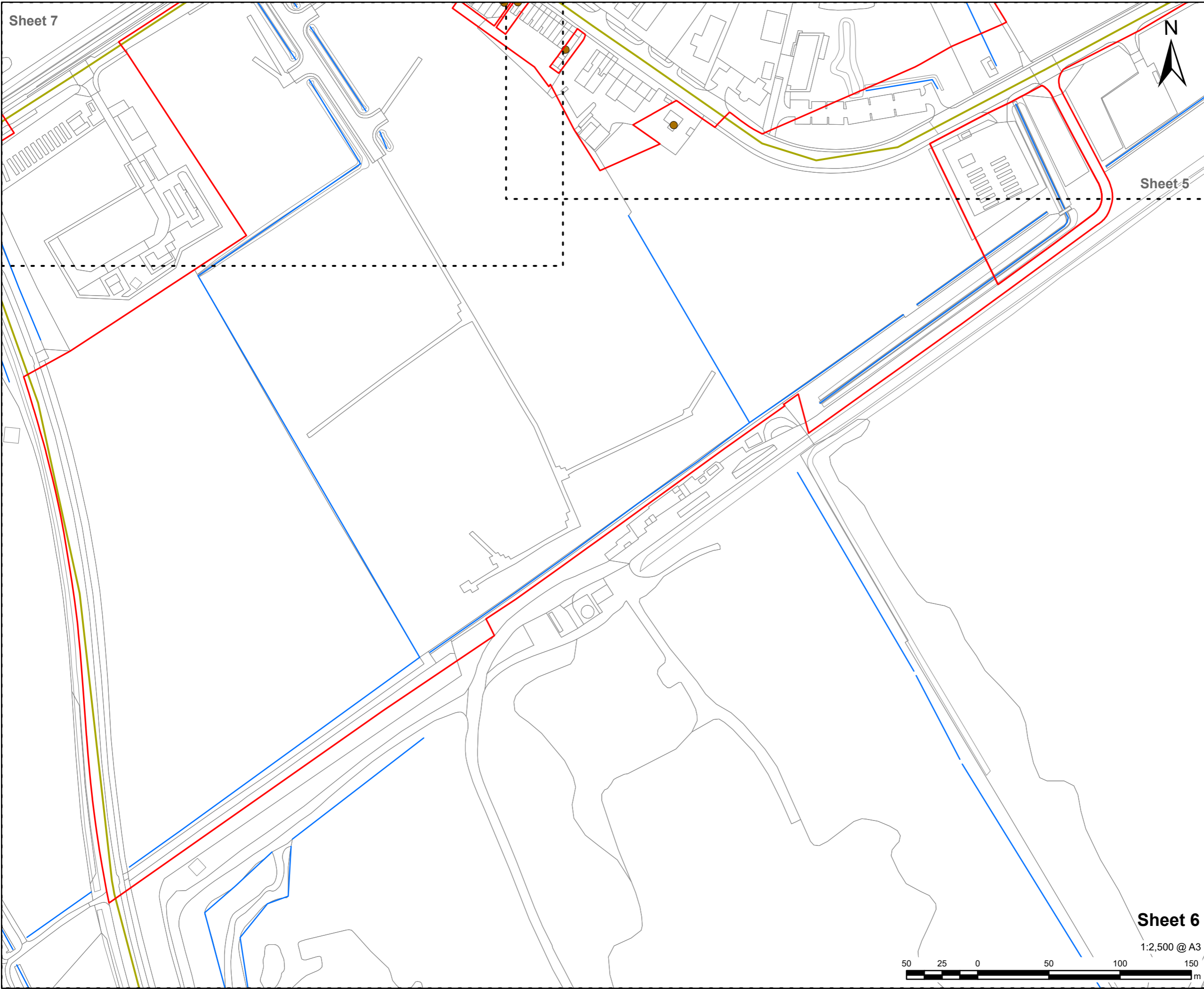
Site and Surrounding Environment
Sheet 5 of 7

FIGURE NUMBER

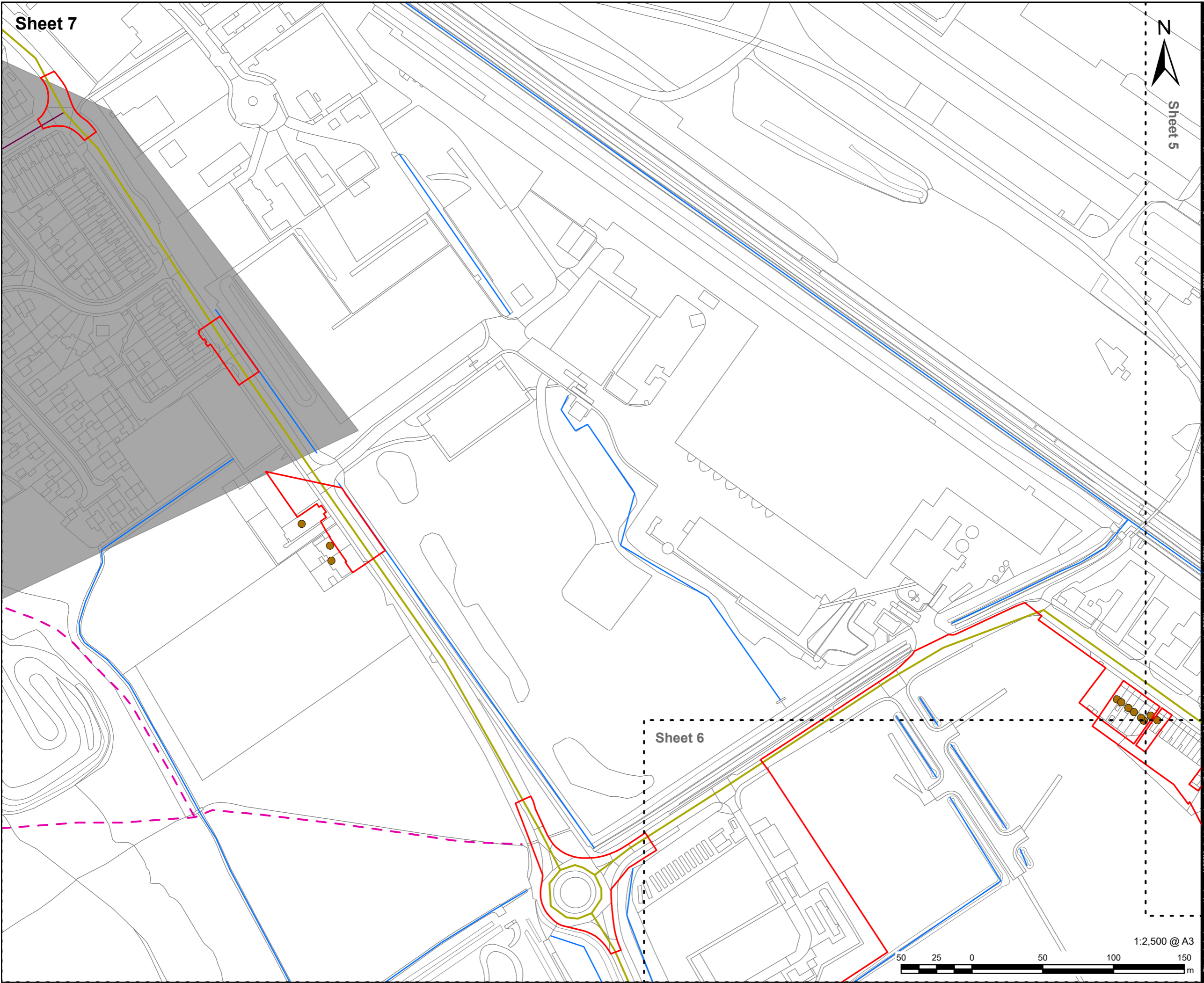
Figure 2.1



This drawing has been prepared for the use of AECOM's client. It may not be used, modified, reproduced or relied upon by third parties, except as agreed by AECOM or as required by law. AECOM accepts no responsibility, and denies any liability whatsoever, to any party that uses or relies on this drawing without AECOM's express written consent. Do not scale this document. All measurements must be obtained from the stated dimensions.



This drawing has been prepared for the use of AECOM's client. It may not be used, modified, reproduced or relied upon by third parties, except as agreed by AECOM or as required by law. AECOM accepts no responsibility, and denies any liability whatsoever, to any party that uses or relies on this drawing without AECOM's express written consent. Do not scale this document. All measurements must be obtained from the stated dimensions.



AECOM

PROJECT
Immingham Green Energy Terminal

CLIENT
Associated British Ports
Air Products (BR) Limited

CONSULTANT
AECOM Limited
5th Floor
2 City Walk
Leeds, LS11 9AR
www.aecom.com

LEGEND

- Site Boundary
- Residential Receptor
- A1173
- Other Road
- Public Right of Way
- Watercourse
- Residential Area

NOTES

© Natural England copyright. Contains Ordnance Survey data © Crown copyright and database right 2023.
 © Historic England 2023. Contains Ordnance Survey data © Crown copyright and database right 2023. The Historic England GIS Data contained in this material was obtained on 04/09/2023. The most publicly available up to date Historic England GIS Data can be obtained from HistoricEngland.org.uk.
 Contains Ordnance Survey Data © Crown Copyright and database right 2023.
 Reproduced from Ordnance Survey digital map data © Crown copyright 2024. All rights reserved. Licence number 0100031673.

ISSUE PURPOSE
Environmental Statement (Change Application)

PROJECT NUMBER
60673509

DEVELOPMENT CONSENT ORDER NO
TR030008

FIGURE TITLE
Site and Surrounding Environment
Sheet 7 of 7

FIGURE NUMBER
Figure 2.1

This drawing has been prepared for the use of AECOM's client. It may not be used, modified, reproduced or relied upon by third parties, except as agreed by AECOM or as required by law. AECOM accepts no responsibility, and denies any liability whatsoever, to any party that uses or relies on this drawing without AECOM's express written consent. Do not scale this document. All measurements must be obtained from the stated dimensions.